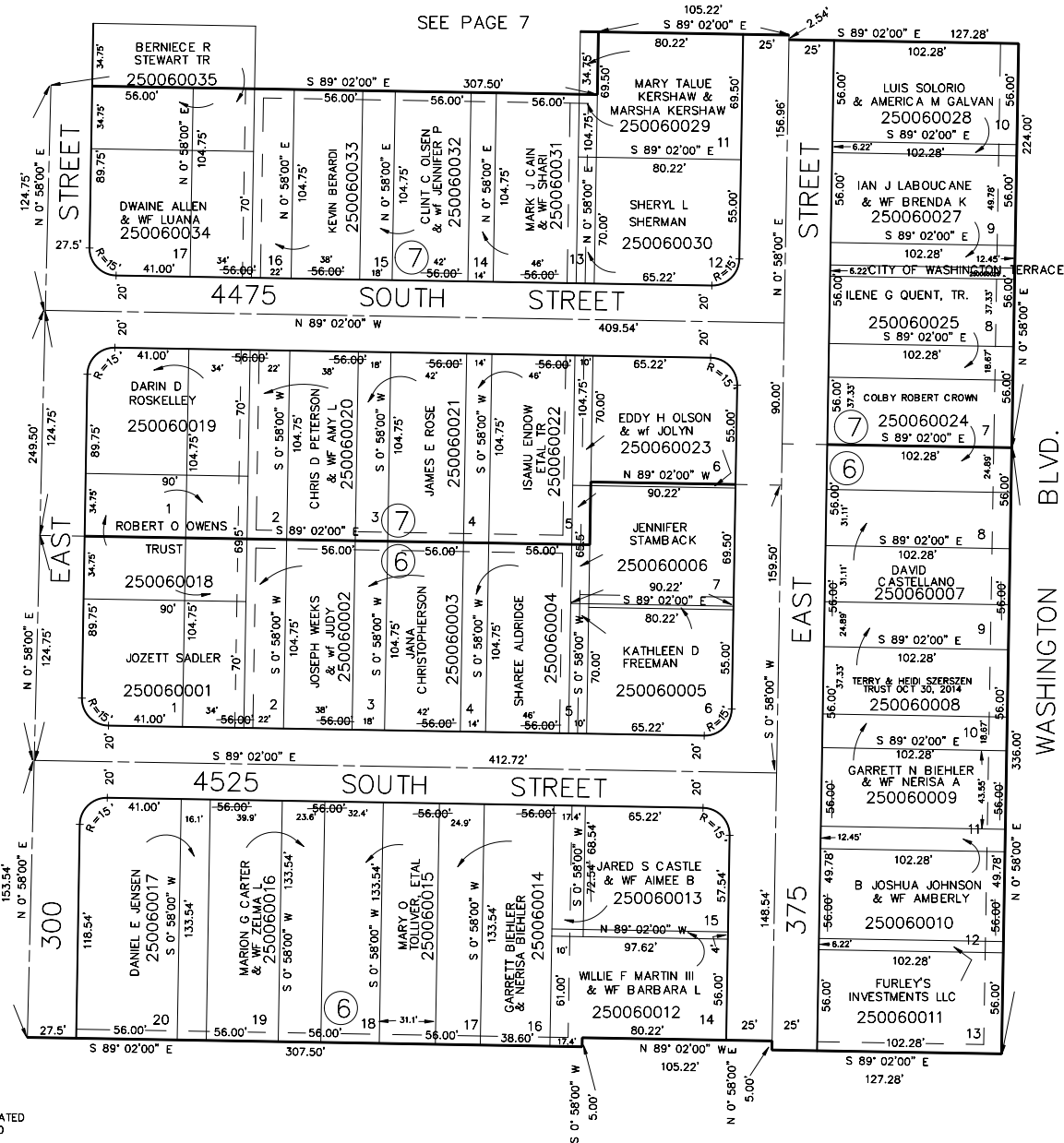


AMENDED PLAT OF  
WASHINGTON TERRACE PARCEL 'A'  
BLOCK 6 & 7

TAXING UNIT: 24

IN WASHINGTON TERRACE CITY

SCALE 1" = 50'



SEE PAGE 7

SEE PAGE 5

SEE BOOK  
6  
PAGE  
19

SEE PAGE 9

OLD EASEMENTS VACATED  
9-3-57, 557-240

NEW EASEMENTS  
561-146

5' UTILITY & DRAINAGE EASEMENTS EACH  
SIDE OF PROPERTY LINES AS INDICATED  
BY DASHED LINES EXCEPT AS OTHERWISE  
SHOWN.

FOR COMPLETE ENG DATA SEE  
ORIGINAL DEDICATION PLAT IN  
BOOK 10, PAGE 77-E OF RECORDS.